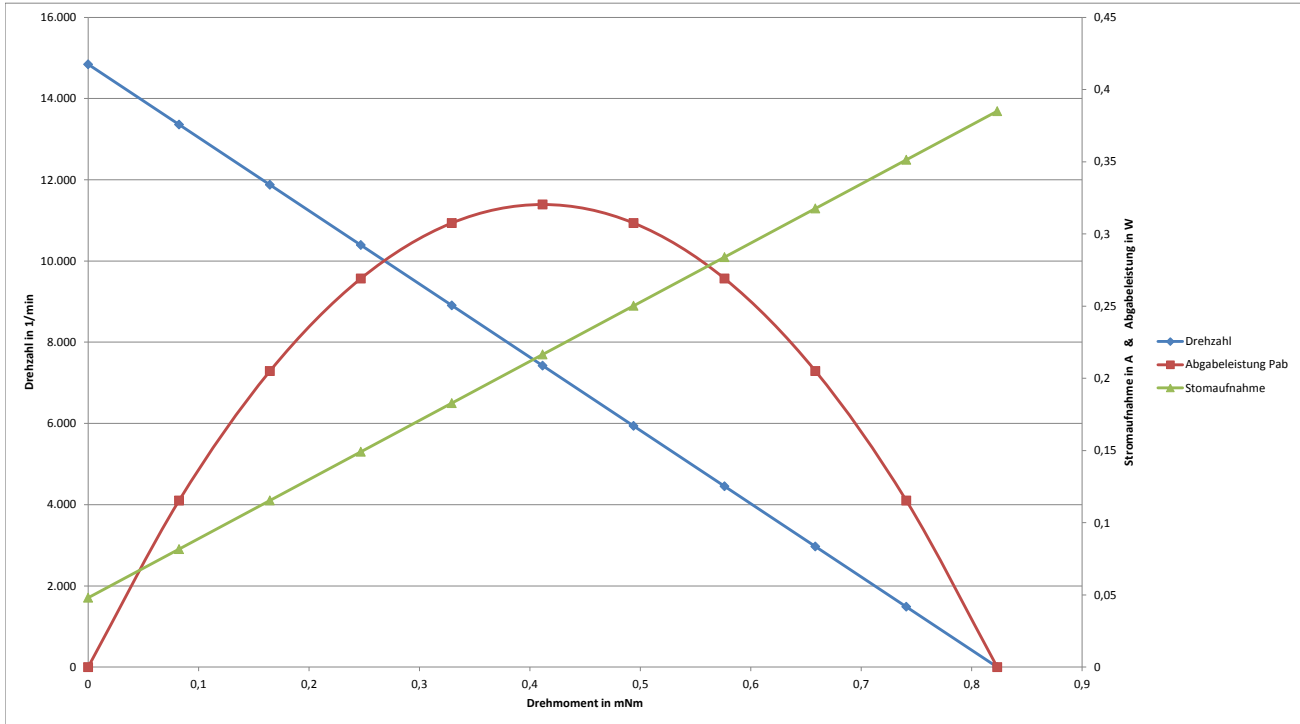
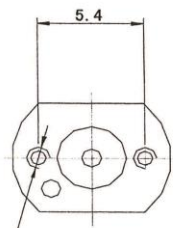
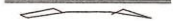


| MODEL | VOLTAGE | | NO LOAD | | AT MAXIMUM EFFICIENCY | | | | STARTING | | max. OUTPUT POWER W | POLES | CAPACITOR | BRUSHES |
|----------------|-----------------|---------|---------|---------|-----------------------|---------|--------|--------------|----------|--------|------------------------|-------|-----------|---------|
| | Operating Range | Nominal | Speed | Current | Speed | Current | Torque | Output Power | Current | Torque | | | | |
| | VDC | VDC | rpm | A | rpm | A | mNm | W | A | mNm | | | | |
| FF-K30WA-8Z107 | 1,5-4,5 | 3,0 | 14.844 | 0,05 | 10.932 | 0,14 | 0,22 | 0,25 | 0,39 | 0,82 | 0,32 | 3 | none | metal |



DIRECTION OF ROTATION



ISO M1, 2X0, 25 TAPPED HOLE
2 PLACES
Usable machine screw length 0.8 max.
form motor mounting surface.

SHAFT LENGTH 25.6

UNIT: MILLIMETERS

