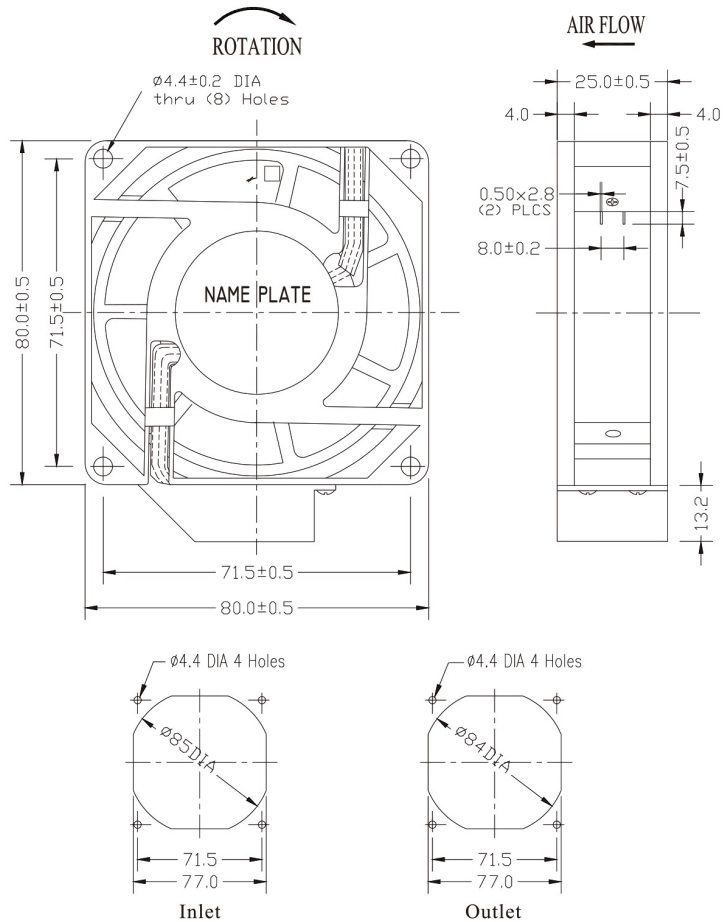


Axial Fan 80 x 80 x 25 mm

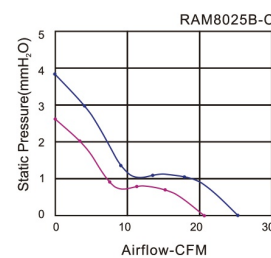
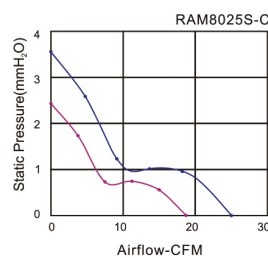
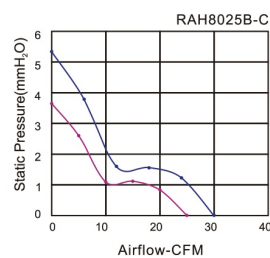
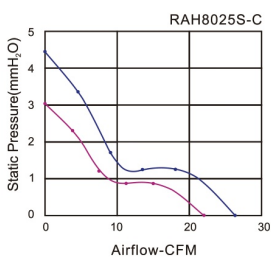
High Air Flow



Size: 80mmx80mmx25mm
Airflow: 31~51m³/hr
 18~30CFM
Weight: 260g
Noise: 21~31dBA
Impeller: PA6 UL94V-0 Reinforced Plastic
Frame: Aluminum Alloy
Terminals: 0.5mm
Lead Wire: AWG#24 UL 1430
 (Optional)
Motor: Capacitor-Run Induction Motor
Safety: UL.CUL.TUV.CE
Operation Temperature: -10°C~+65°C

Unit:mm

Model	Bearing System	Voltage VAC	Freq. Hz	Current A	Power W	Speed RPM	Noise dBA	Air Flow		Static Pressure (mmH ₂ O)	Weight Gram
								M ³ /hr	CFM		
RAH8025S1-C	Sleeve	220~240	50/60	0.08/0.09	17/19	2500/3000	24/29	37/44	22/26	3.0/4.4	260
RAM8025S1-C		220~240	50/60	0.07/0.07	15/15	2150/2800	21/25	31/43	18/25	2.2/3.5	
RAH8025S2-C		100~125	50/60	0.13/0.14	15/17	2500/3000	24/29	37/44	22/26	3.0/4.4	
RAM8025S2-C		100~125	50/60	0.10/0.10	12/12	2150/2800	21/25	31/43	18/25	2.2/3.5	
RAH8025B1-C	Ball	220~240	50/60	0.08/0.09	17/19	2800/3350	27/31	43/51	25/30	3.6/5.3	
RAM8025B1-C		220~240	50/60	0.07/0.07	15/15	2350/2850	23/27	36/43	21/25	2.6/3.8	
RAH8025B2-C		100~125	50/60	0.13/0.14	15/17	2800/3350	27/31	43/51	25/30	3.6/5.3	
RAM8025B2-C		100~125	50/60	0.10/0.10	12/12	2350/2850	23/27	36/43	21/25	2.6/3.8	



Key
 — 60Hz
 — 50Hz