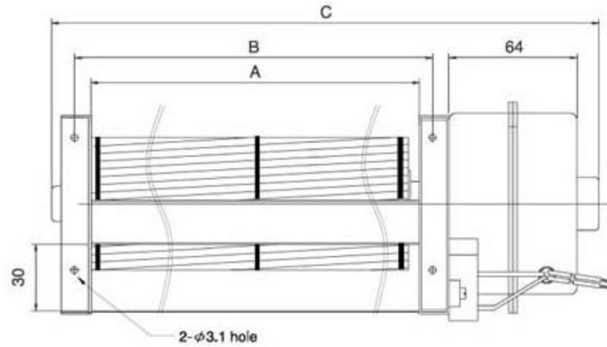
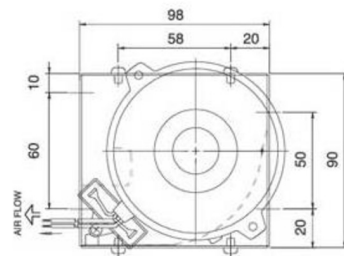




CA060C- Series



Size	Ø60mm
Housing	Aluminum
Impeller	Aluminum
Motor	AC Capacitv Type
Operating Temp.	0°C ~+45°C
Insulation	Class A



Model Number	Size (mm)			Voltage (V)	Frequency (Hz)	Current (A)	Power (W)	Speed (RPM)	Air Flow (CFM)	Pressure (mmH2O)	Noise (dB(A))	Weight (g)
	A	B	C									
CA06030_HWC	306	321	415	110	60	0.32	35	2800	194	7.6	54	1800
				120	60	0.33	39	2900	205	7.8	55	
				220	50/60	0.14/0.17	30/38	2500/2600	183/194	5.0/7.6	50/54	
				230	50	0.15	31	2600	183	5.0	50	
CA06036_HWC	368	383	447	110	60	0.34	38	2500	223	5.4	53	1850
				120	60	0.35	42	2600	240	6.7	54	
				220	50/60	0.15/0.18	32/40	2500/2500	219/223	4.5/5.4	53/53	
				230	50	0.16	34	2500	223	5.3	53	
CA06042_HWC	429	444	538	110	60	0.38	42	2400	240	4.8	52	1930
				120	60	0.39	47	2600	267	5.9	54	
				220	50/60	0.16/0.19	35/43	2400/2400	234/234	4.1/5.0	52/52	
				230	50	0.17	36	2500	252	4.4	53	

_ for B / S = Ball Bearing / Sleeve Bearing

