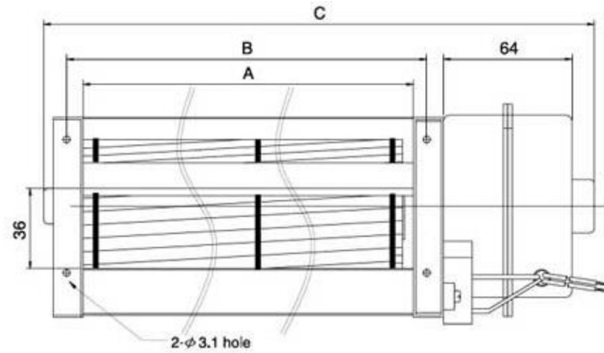
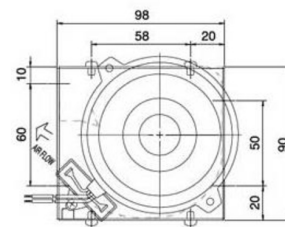




# CA060V- Series



|                 |                  |
|-----------------|------------------|
| Size            | Ø60mm            |
| Housing         | Aluminum         |
| Impeller        | Aluminum         |
| Motor           | AC Capacity Type |
| Operating Temp. | 0°C ~+45°C       |
| Insulation      | Class A          |

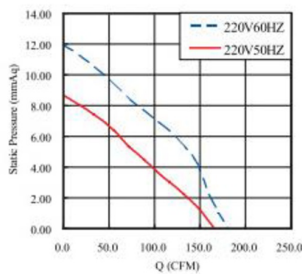


| Model Number | Size (mm) |     |     | Voltage (V) | Frequency (Hz) | Current (A) | Power (W) | Speed (RPM) | Air Flow (CFM) | Pressure (mmH2O) | Noise (dB(A)) | Weight (g) |
|--------------|-----------|-----|-----|-------------|----------------|-------------|-----------|-------------|----------------|------------------|---------------|------------|
|              | A         | B   | C   |             |                |             |           |             |                |                  |               |            |
| CA06030_HVV  | 306       | 321 | 415 | 110         | 60             | 0.34        | 38        | 2700        | 183            | 12               | 53            | 1770       |
|              |           |     |     | 120         | 60             | 0.34        | 41        | 2800        | 205            | 12               | 53            |            |
|              |           |     |     | 220         | 50/60          | 0.15/0.18   | 32/40     | 2500/2700   | 166/183        | 9/12             | 50/53         |            |
|              |           |     |     | 230         | 50             | 0.15        | 33        | 2600        | 181            | 10               | 52            |            |
| CA06036_HVV  | 368       | 383 | 477 | 110         | 60             | 0.37        | 41        | 2600        | 209            | 11               | 54            | 1860       |
|              |           |     |     | 120         | 60             | 0.38        | 46        | 2700        | 235            | 12               | 56            |            |
|              |           |     |     | 220         | 50/60          | 0.15/0.19   | 35/43     | 2500/2600   | 195/208        | 8/11             | 53/54         |            |
|              |           |     |     | 230         | 50             | 0.16        | 36        | 2500        | 212            | 10               | 53            |            |
| CA06042_HVV  | 429       | 444 | 538 | 110         | 60             | 0.38        | 41        | 2500        | 247            | 12               | 54            | 1930       |
|              |           |     |     | 120         | 60             | 0.39        | 46        | 2600        | 265            | 11.5             | 55            |            |
|              |           |     |     | 220         | 50/60          | 0.16/0.2    | 35/43     | 2400/2400   | 237/237        | 9/11             | 53/53         |            |
|              |           |     |     | 230         | 50             | 0.16        | 37        | 2500        | 247            | 10               | 51            |            |

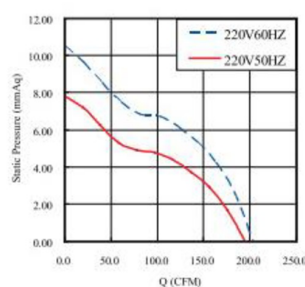
\_ for V11/V22 AV Voltage

\_ for B / S = Ball Bearing / Sleeve Bearing

CA06030



CA06036



CA06042

